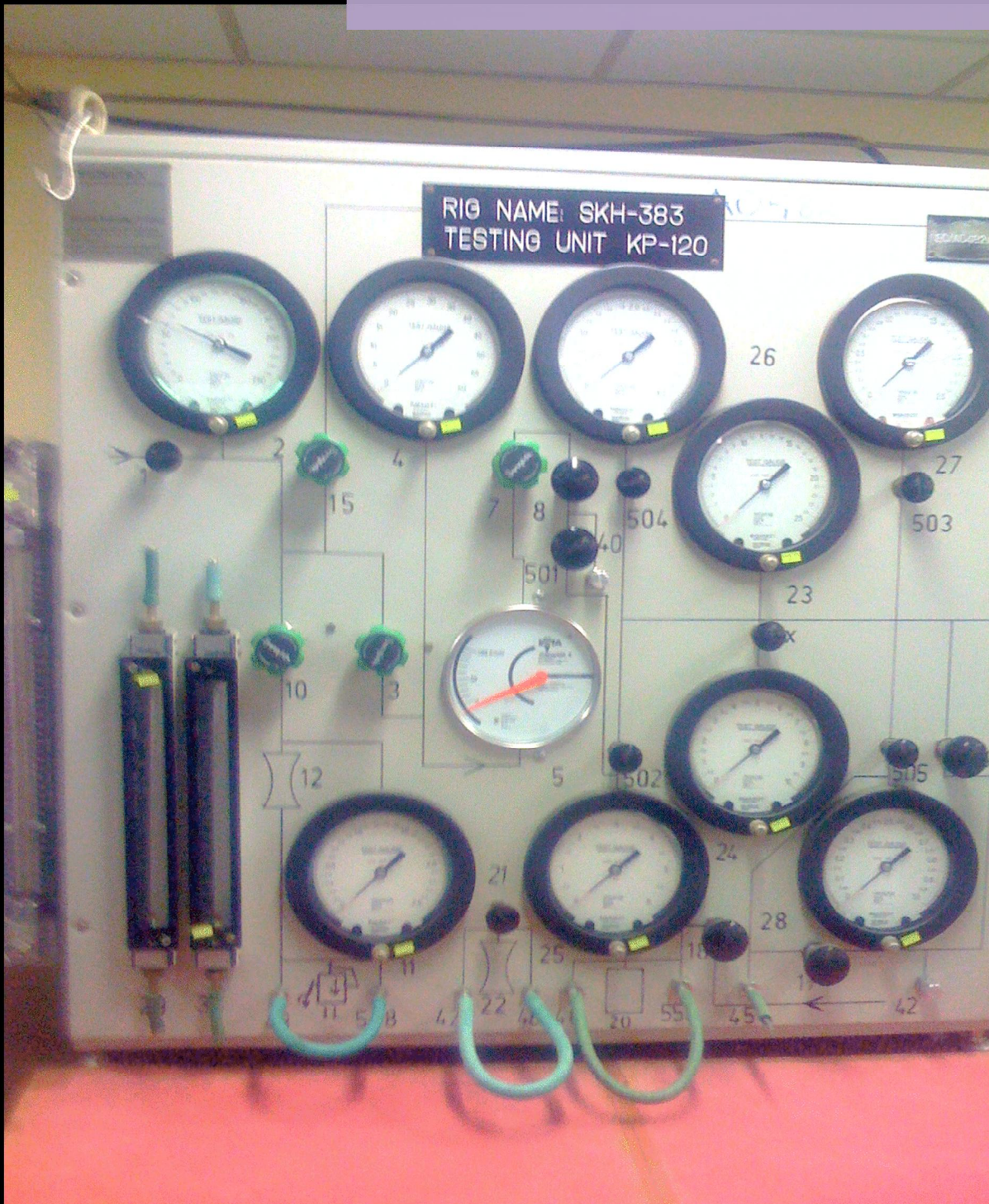


NEOMETRIX ENGINEERING (P) LTD



OXYGEN REGULATOR RIG

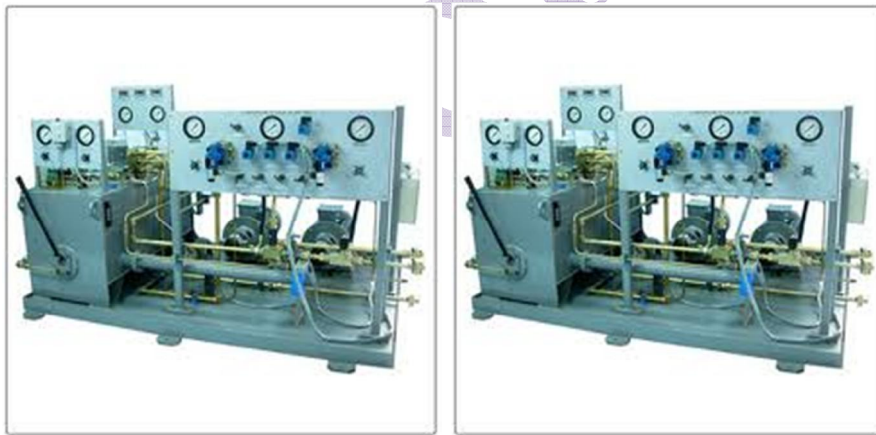
GENERAL DISCRIPTION:-

THE NEOMETRIX OFFERS NX-A0452 SERIES RIG.

The rig is designed for checking various functional parameters of oxygen pressure regulator. The oxygen pressure regulator RD-15(UNIT UNDER TEST<UUT>) is the part of the main unit oxygen breathing equipment (KDA-15).

The oxygen breathing equipment KDA-15 ensure as a part of oxygen-equipment complete set, the supply of oxygen to every member and protection from harmful substances for breathing .during flight in hermetically sealed and in case of loss of sealing of cockpit up to service ceiling of fly aircraft .during leaving the aircraft simultaneous automatic switching over to oxygen supply from oxygen system of ejection seat as well as to ensure creation of gauge pressure of oxygen for the breathing system depending on “g” load valve.

CONFIGURATION OF THE RIG:-



The Test Rig

contains the following major components

- *Oxygen Valves*
- *Oxygen Pressure Reducing Regulators*
- *Oxygen Pressure gauges*

- *Oxygen Rota meter*
- *Flow Regulators*
- *Oxygen Reservoir*
- *Heat Chamber*
- *Fixtures and other miscellaneous items.*

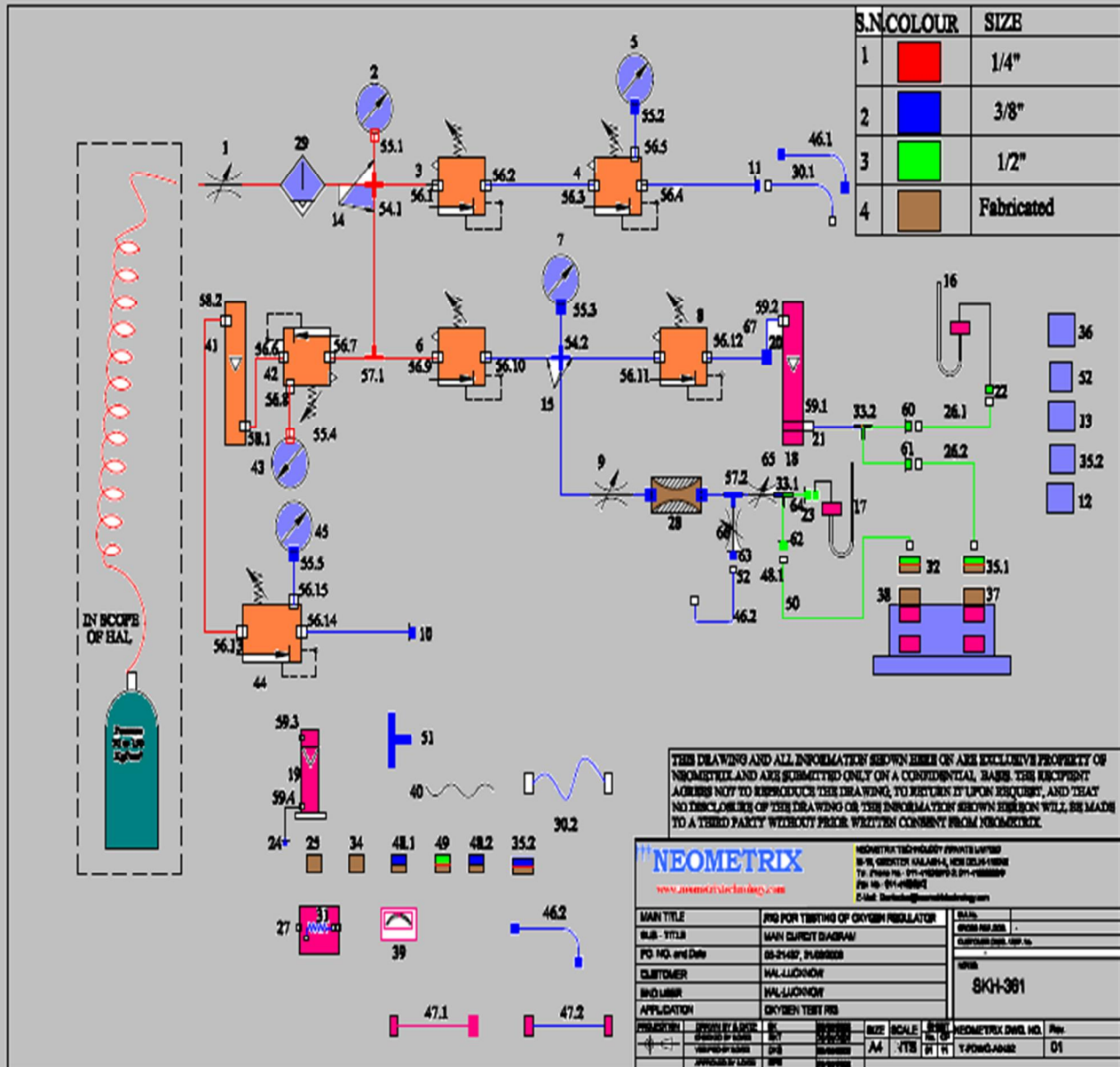
GERNAL CHARACTERISTICS

- All components, gauges, measuring instruments are selected for oxygen services and approved by competent agencies.
 - Preferably all parts of the system coming in contact with the working fluid are made up of stainless steel.
- All component and parts are to be clearly tagged by suitable labels.
- The entire system tested 1.5 times of the design pressure, there are also test certificates provide.
- All hoses are design with easy connection and disconnection for the ease of operator.
- All pipelines of the system are of seamless stainless steel suitable for oxygen use confirming to international standards.
- There is providing all other necessary control to safe guard the operating personnel.
- All items used inside the heat chamber are able to withstand the

- There is needle valve used for smooth closing and opening and no


MAIN CIRCUIT DRAWING

Neometrix



THE CIRCUIT DRAWING OF THE PUMP TEST RIG IS SHOWN AS ABOVE WITH ALL EQUIPMENT, IN WHICH DETAILED NECESSARY INFORMATION IS SHOWN***

KEY FEATURE



Oxygen is a fire hazard as it promotes Combustion. So we select standard product and Design procedure, are as like:-

- **Cleanliness Level:** *For Oxygen Systems, we Use components (Cleaning & Packaging as per ASTM G93 Level C (Swagelok Special Cleaning and Packaging-SC11).*
- ***We propose to use Pressure Regulators with Built in relief Valves for further safety.***
- **Leak Proof:** *Swagelok components (Proposed) Are leak tested and final assembly is also leak Tested.*
- *We follow following standards in our design, Component selection and final assembly of the System:*
 - **NFPA 53:** *Serious Oxygen System Fires*
 - **ASTM G4/ASTM G 128:** *Fire Hazards in Oxygen Systems*
 - **G88/ MNL36:** *Design Guidance for Oxygen Safety Systems*

TECHNICAL SPECIFICATION

S.NO	ITEM	SPECIFICATION
• 1	• Needle valve(on/off)	• maximum working pressure-200bars
• 2	• oxygen pressure reducing valve	• maximum working pressure-30 bars
• 3	• oxygen pressure gauge	• pressure range- 0 to 250 bars
• 4	• Heatchamber	• temperature range- -50°C to + 50 °C

Operation of the rig is operated by single operator; size of the rig is optimum for handy operation etc.

Controls on control panel is in sequence and accessible for easy operation.



CONTACT US

NEOMETRIX ENGINEERING (P) LTD

***E-148, Sector-63
NOIDA- 201 301***

***Tel: +91-120-4500800,
Fax: +91-120-4500888,***

contact@neometrix.in